

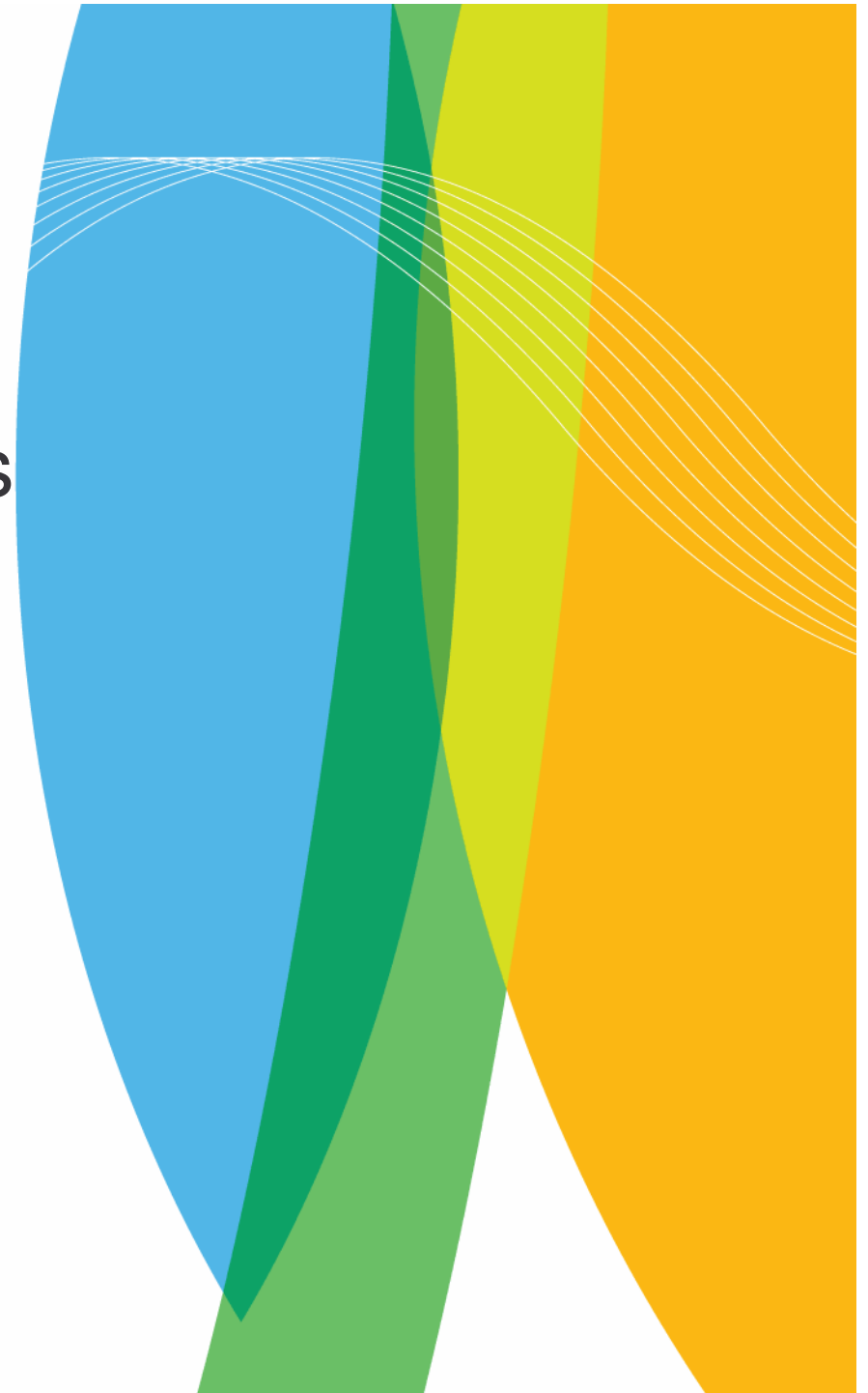


ILMATIETEEN LAITOS
METEOROLOGISKA INSTITUTET
FINNISH METEOROLOGICAL INSTITUTE

Helsinki Climate Studies

Achim Drebs

Finnish Meteorological Institute





Content

Short description of the Metropolitan Climate Network, MCN

Some results of the MCN data

Comments of the use of Helsinki Testbed, HTB, measurement points in the MCN

- Location
- Maintenance
- Comparison between WXT510 and MCN datalogger observations

Comments on the HTB GUI and datawarehouse

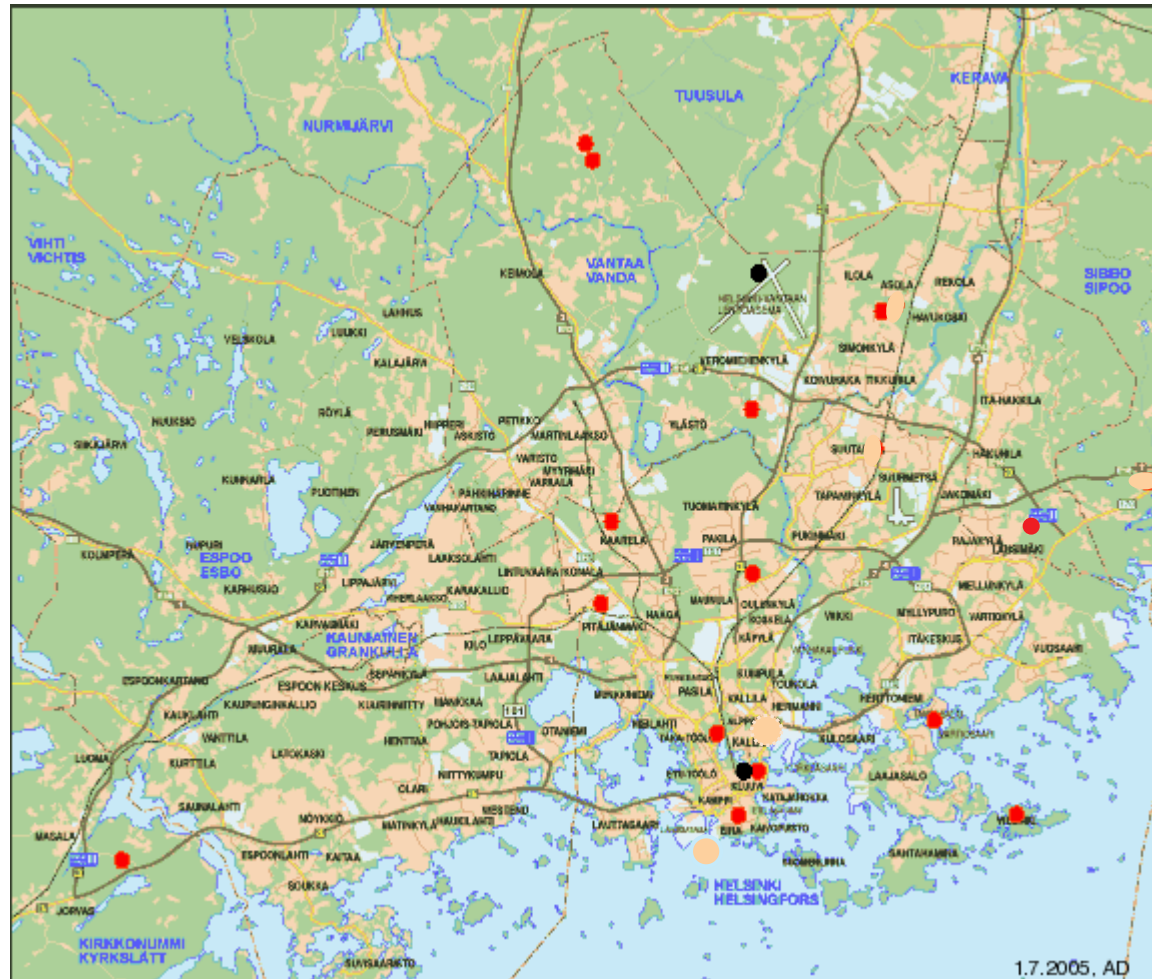


ILMATIETEEN LAITOS
METEOROLOGISKA INSTITUTET
FINNISH METEOROLOGICAL INSTITUTE



The Metropolitan Climate Network

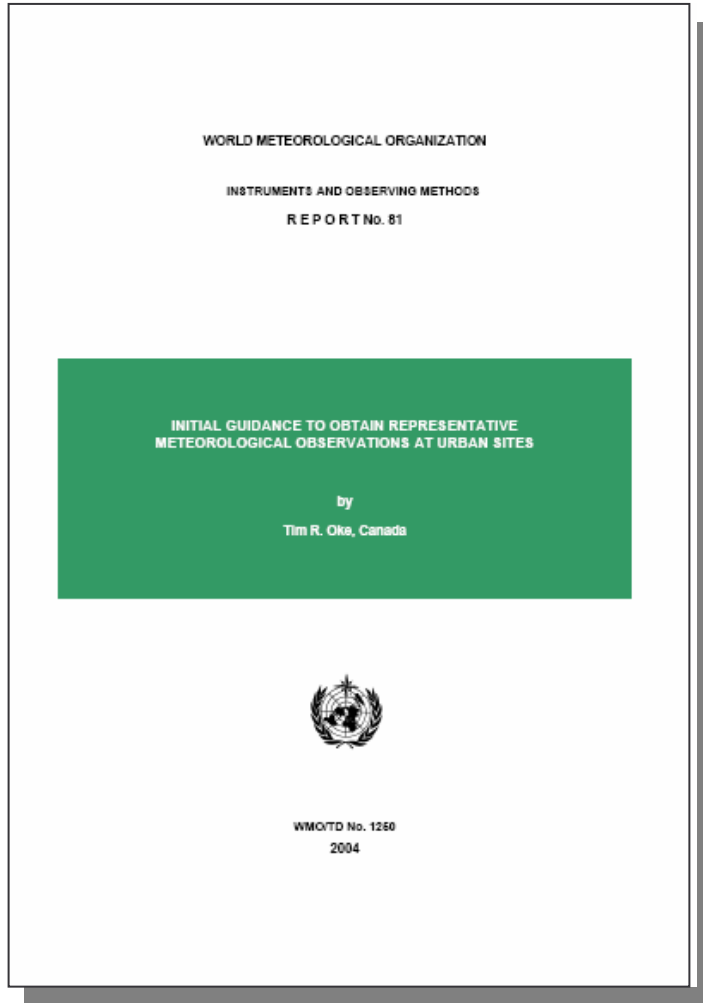
April 2007



● Data logger, urban climate network ● FMI, official weatherstation



ILMATIETEEN LAITOS
METEOROLOGISKA INSTITUTET
FINNISH METEOROLOGICAL INSTITUTE

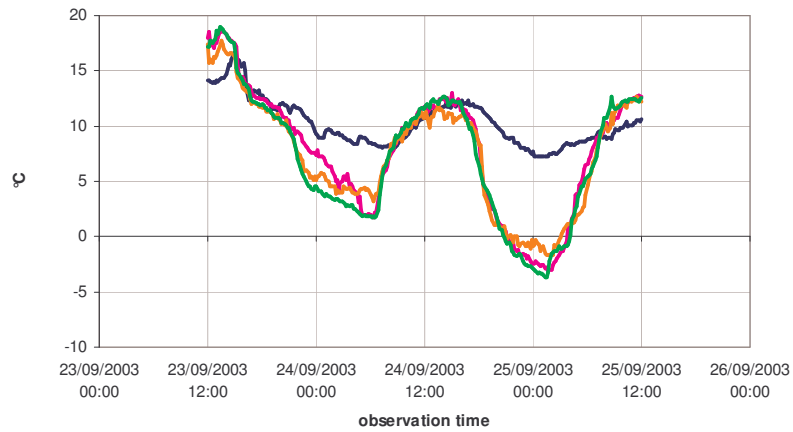
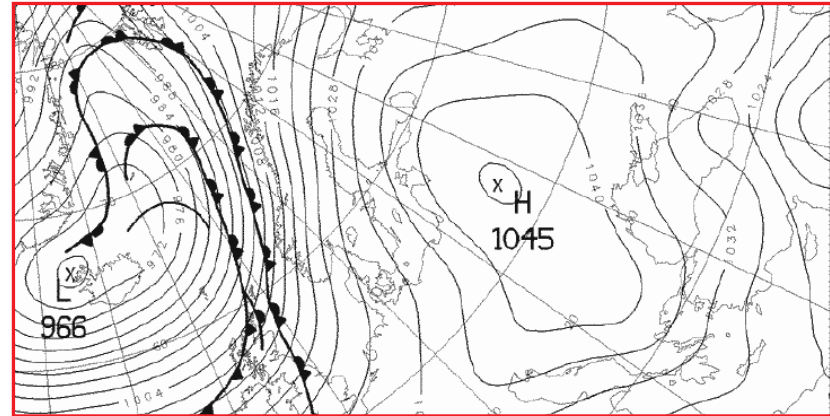
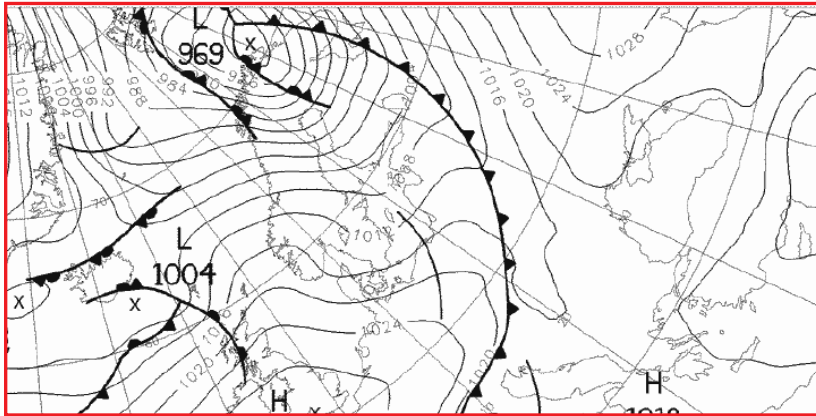


MCN measurement point in
Itä-Pakila

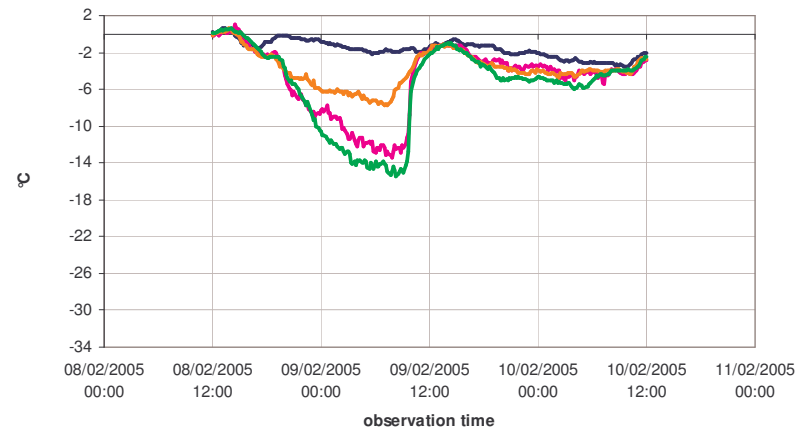
Instruments and observing methods Report No.81, WMO, 2004



Some results from the MCN



24.9.2003



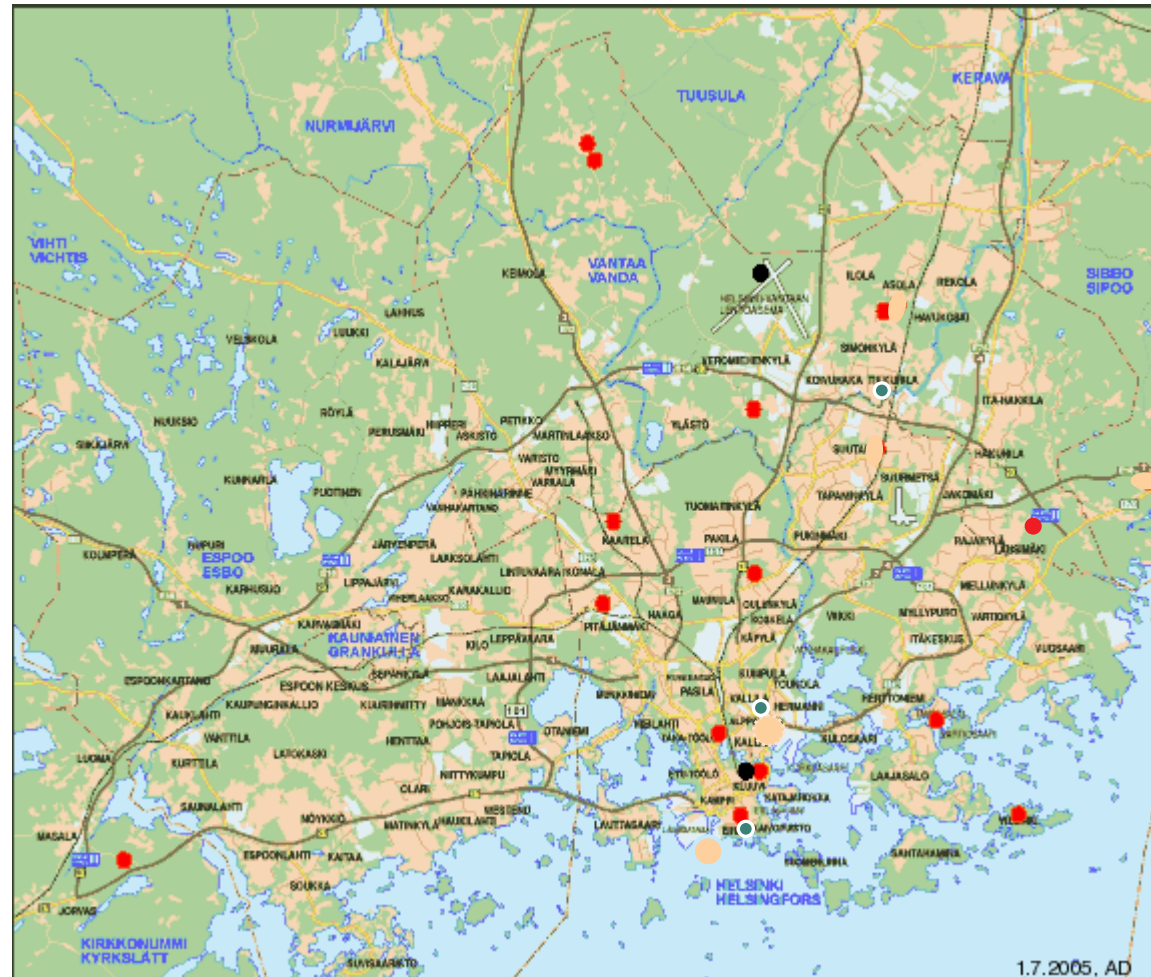
9.2.2005



The Metropolitan Climate Network

April 2007

and the four HTB stations
Bulevardi,
Kaivopuisto,
Vallila, and
Tikkurila



- Data logger, urban climate network
- FMI, official weatherstation
- HTB station



The four HTB stations used in the MCN

Bulevardi



Kaivopuisto

Vallila



Tikkurila



About the maintenance of the HTB stations



After two months in operation (2005) ...



About the maintenance of the HTB stations

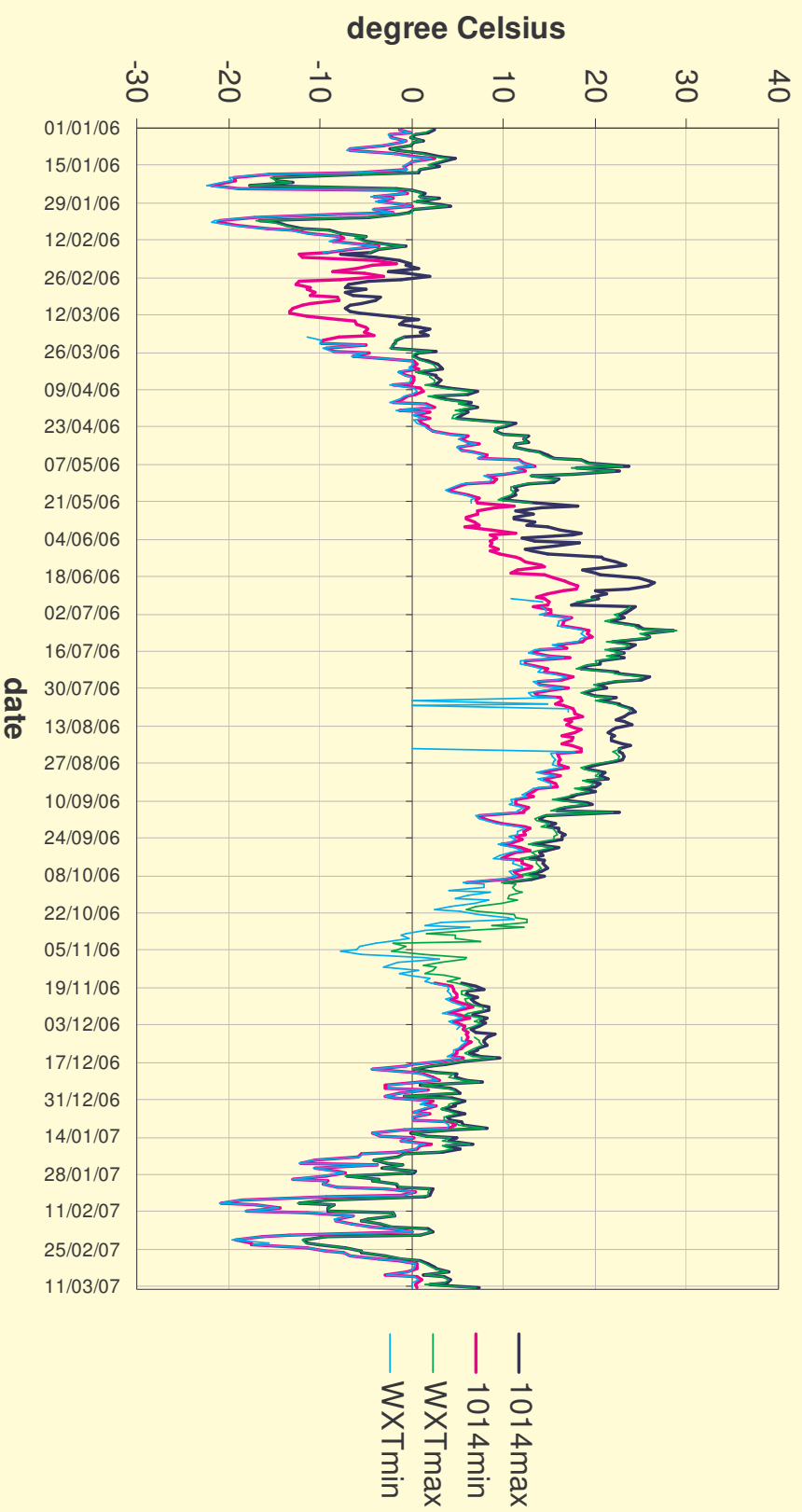


And today, 11.4.2007



Comparison between WXT510 and MCN datalogger observations

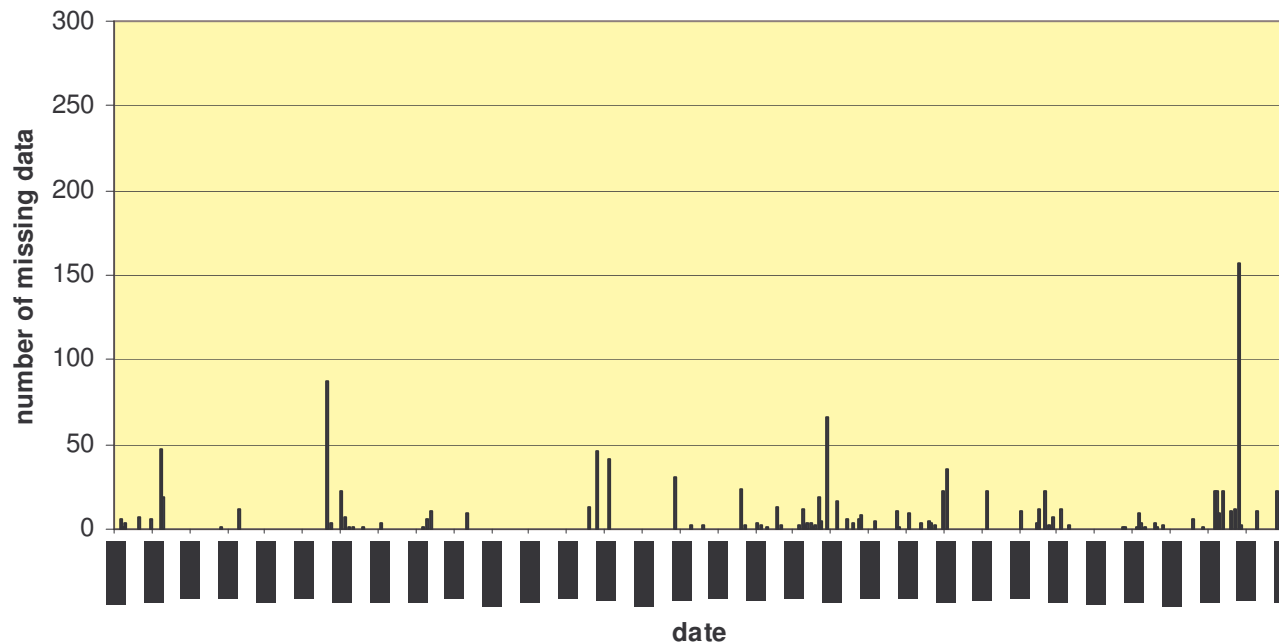
Bulevardi WXT - MCN datalogger 1.1.2006 - 11.3. 2007





Missing data – HTB Bulevardi

HTB Bulevardi 1.1.2006 - 11.3.2007



1114 missing data



74 days with
missing data

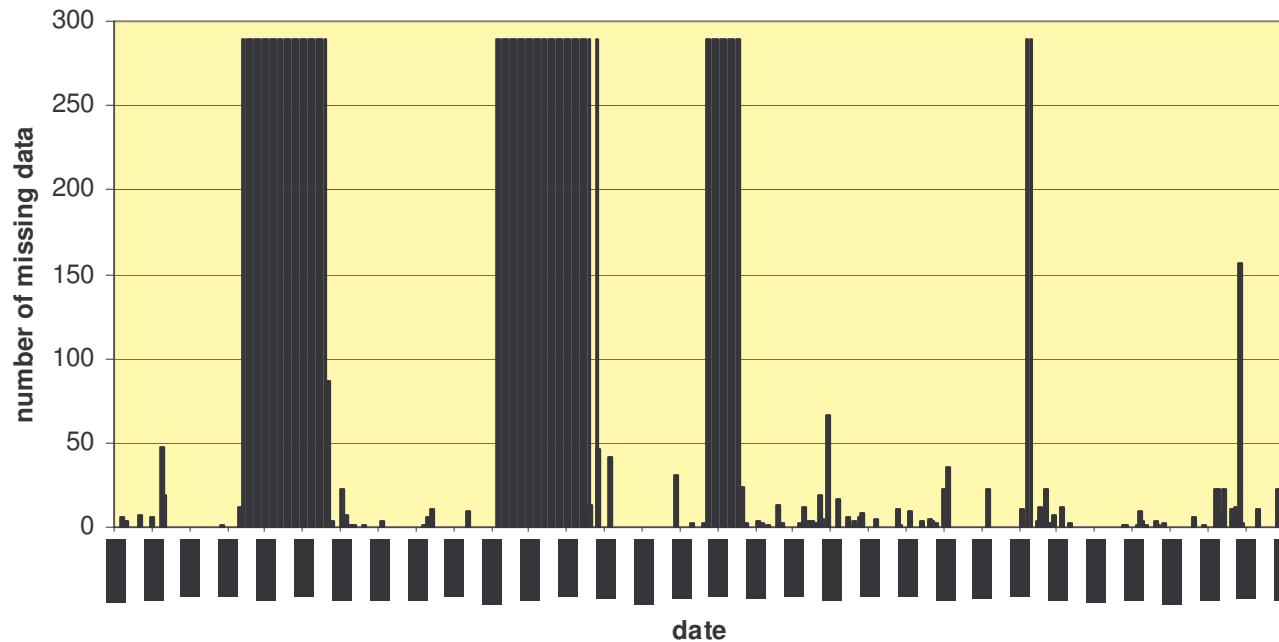


in average 15 missing data
for days with missing data



Missing data – HTB Bulevardi

HTB Bulevardi 1.1.2006 - 11.3.2007



1114 missing data



74 days with
missing data



in average 15 missing data
for days with missing data



ILMATIETEEN LAITOS
METEOROLOGISKA INSTITUTET
FINNISH METEOROLOGICAL INSTITUTE



Thank You !